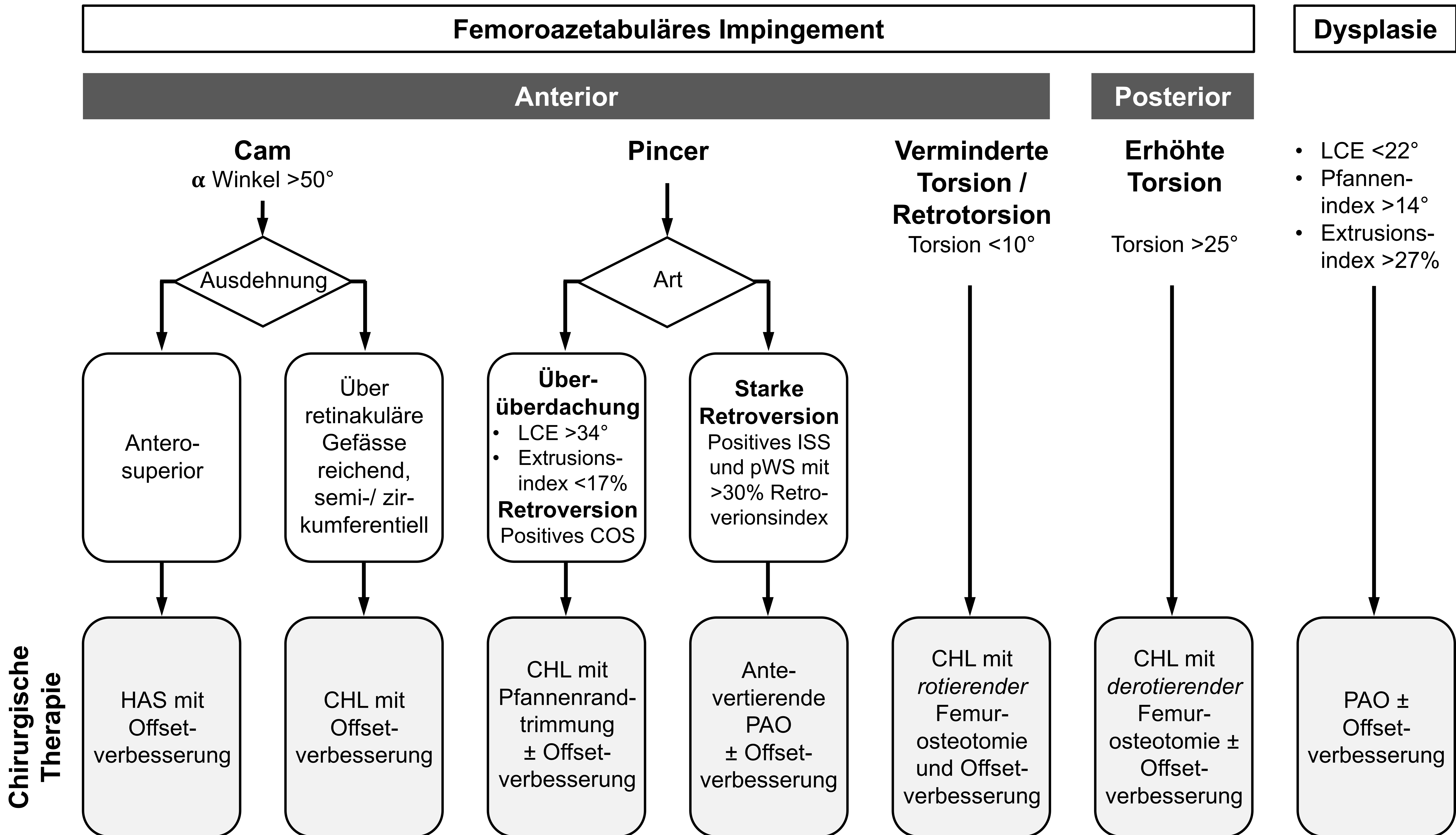


Behandlungsalgorithmus hüftgelenkserhaltende Chirurgie



HAS = Hüftarthroskopie; CHL = Chirurgische Hüftluxation; PAO = Periazetabuläre Osteotomie; LCE = lateral center edge Winkel; COS = cross over sign; ISS = ischial spine sign; pWS = posterior wall sign